

47+00 = Limit of Work 540

46+50 = End Full Section Construction

541.82  
-3  
540  
-3  
540  
-3

540

15+00

535

14+50

535

14+00

535

13+50

535

13+00

530

12+50

525

12+00

525

11+50

520

11+00

515

10+50

510

10+00

505

39+50

EL. 500

STA. 39+00

\* These sections are replaced by X-sections plotted in Sept. 1966

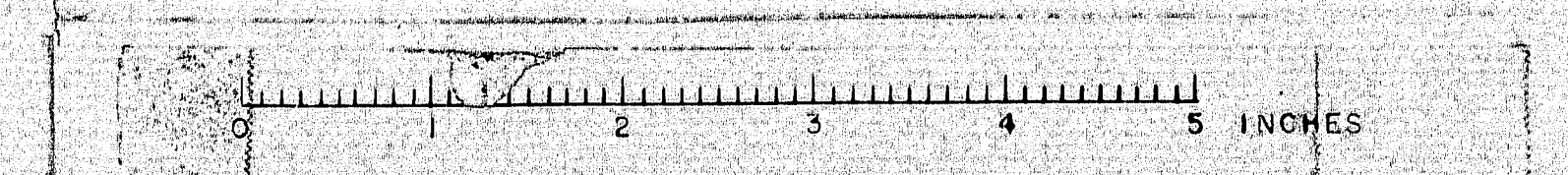
VOID

DESIGN: COT  
CHECK: CRH & PMW

**CASEY ROAD BRIDGE**  
OVER  
**INTERSTATE 95**  
IN THE TOWN OF  
BENEDICTA, AROOSTOOK COUNTY  
AND IN THE TOWNSHIP OF  
T2,R6 W.E.L.S, PENOBSCOT COUNTY

CROSS SECTIONS, STA. 39+00 - STA. 47+00

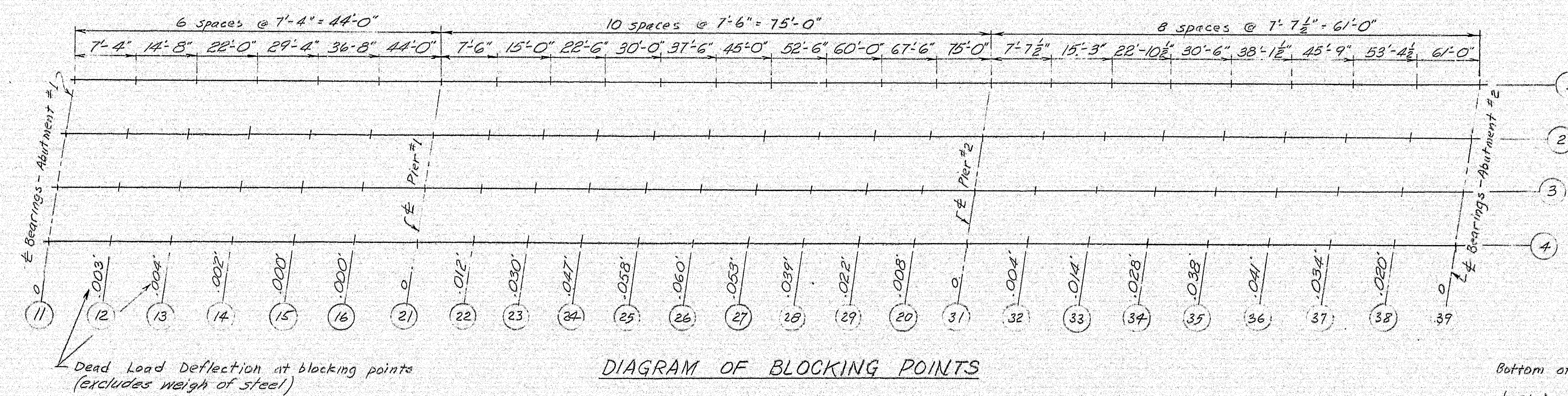
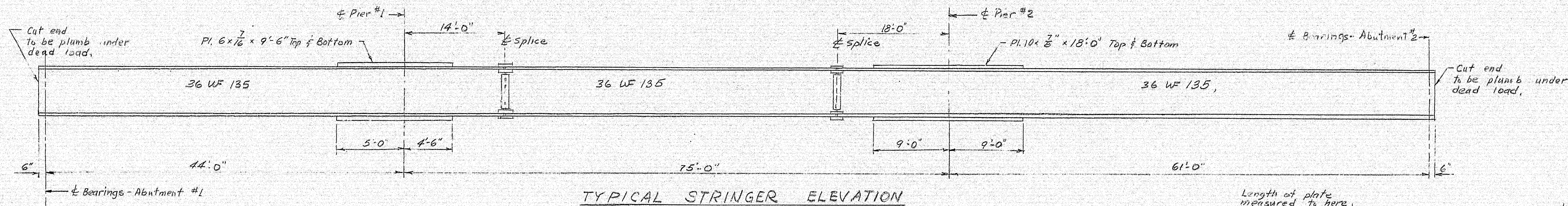
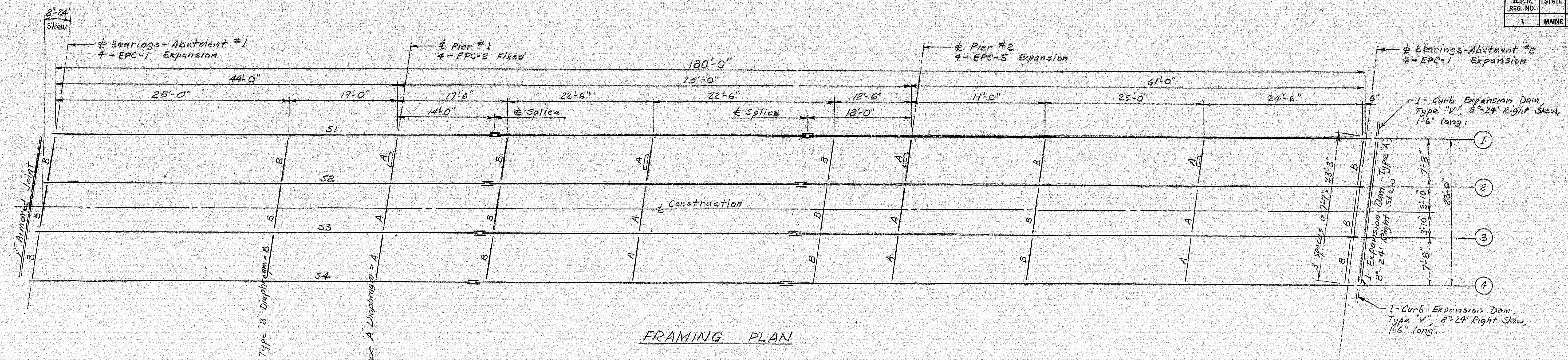
4 LANE REVISION DEC. 1966  
MAR. 1966



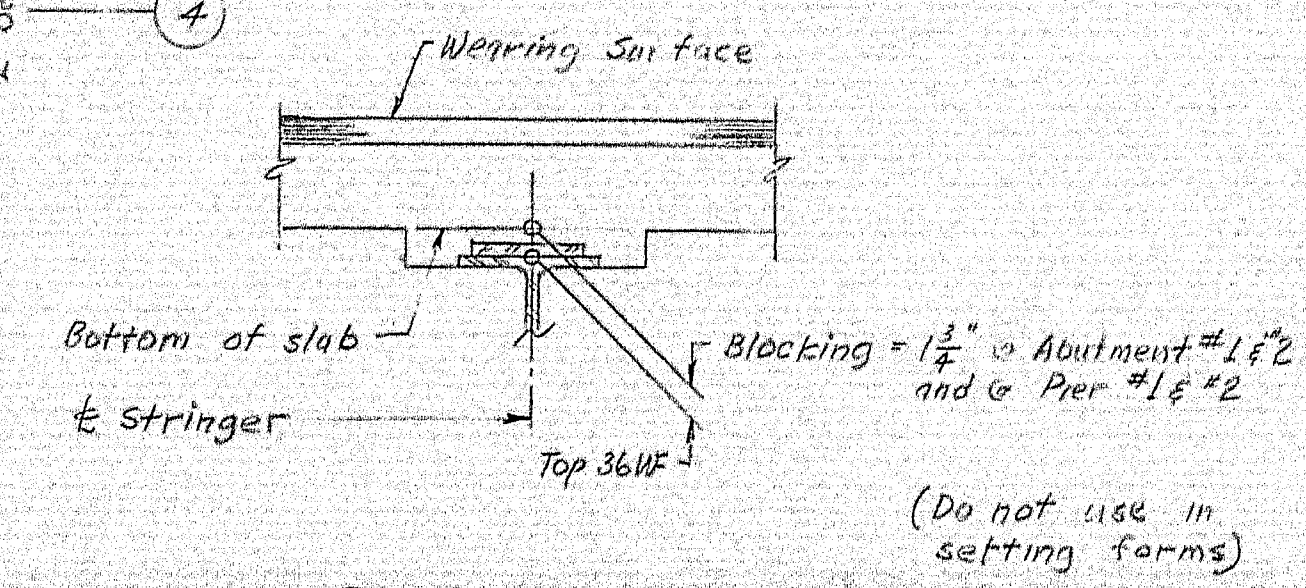
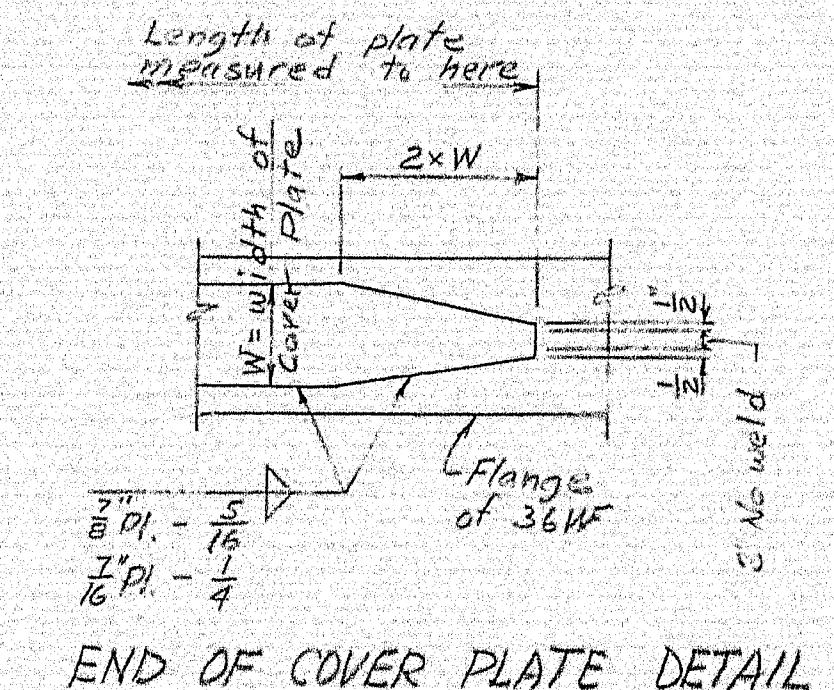








BOTTOM OF SLAB ELEVATIONS AT BLOCKING POINTS																			
POINT	11	12	13	14	15	16	21	22	23	24	25	26	27	28	29	30	31	32	33
LINE 1	481.81	482.36	482.92	483.47	484.02	484.57	485.13	485.71	486.29	486.87	487.45	488.02	488.58	489.13	489.68	490.23	490.79	491.37	491.96
LINE 2	481.88	482.44	482.99	483.54	484.09	484.64	485.20	485.78	486.36	486.95	487.52	488.09	488.65	489.20	489.75	490.31	490.86	491.44	492.03
LINE 3	481.79	482.35	482.91	483.46	484.01	484.56	485.12	485.70	486.28	486.86	487.44	488.01	488.57	489.12	489.67	490.22	490.78	491.36	491.94
LINE 4	481.55	482.11	482.66	483.21	483.76	484.31	484.87	485.45	486.03	486.62	487.20	487.76	488.32	488.88	489.42	489.98	490.53	491.11	491.70



**BLOCKING NOTE:**  
To compensate for dead load deflections as well as possible irregularities in beams, set the bottom of slab elevations at the points indicated before any of the slab formwork is started.

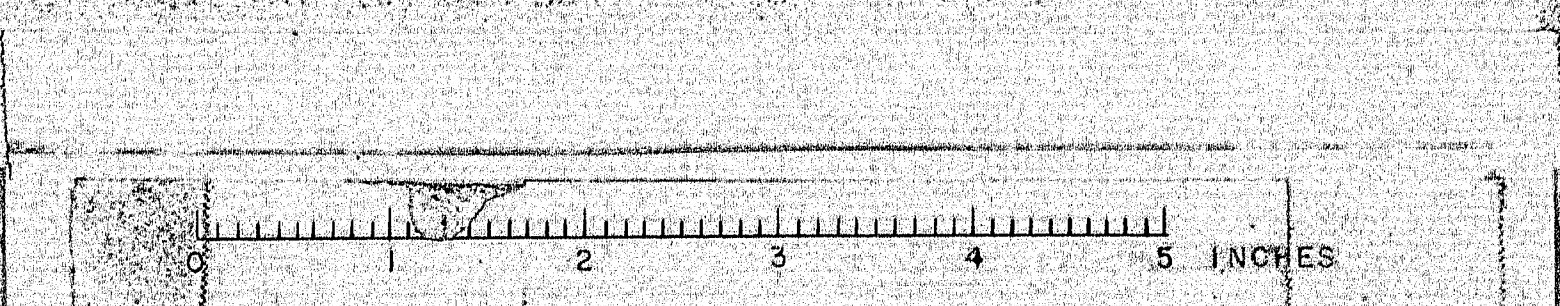
- NOTES**
- Except as otherwise noted on the Standard Details, all steel shall conform to A.S.T.M. designation A36.
  - No shop number required. Any natural mill camber shall be placed up.
  - All plan dimensions are horizontal.
  - References:  
Diaphragms - See Standard Details BD104-64  
Bearing Pedestals - See Standard Details BD101-64  
Expansion Joints - See Standard Details BD105-64  
Armored Joint - See Standard Details BD107-64  
Splices - See Standard Details BD103-64.

**VOID**

DESIGN - CDH	BRIDGE NO.
TRACE - CDH	SURVEY
CHECK - CDH	PLOT

STATE HIGHWAY COMMISSION  
BRIDGE DIVISION  
**CASEY ROAD BRIDGE**  
OVER  
**INTERSTATE 95**  
IN THE TOWN OF  
BENEDICTA, AROOSTOOK COUNTY  
AND IN THE TOWNSHIP OF  
T2,R6 WELLS, PENOBSCOT COUNTY  
STRUCTURAL STEEL & BLOCKING  
SHEET 13 OF 26 AUGUSTA, MAINE MAR 1966

**VOID 100-196**



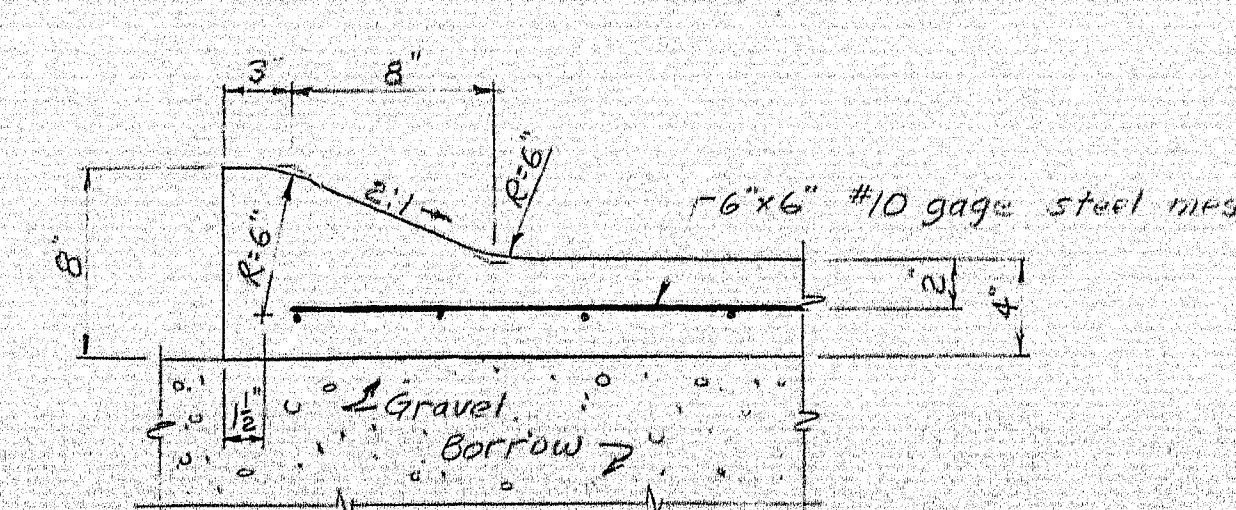
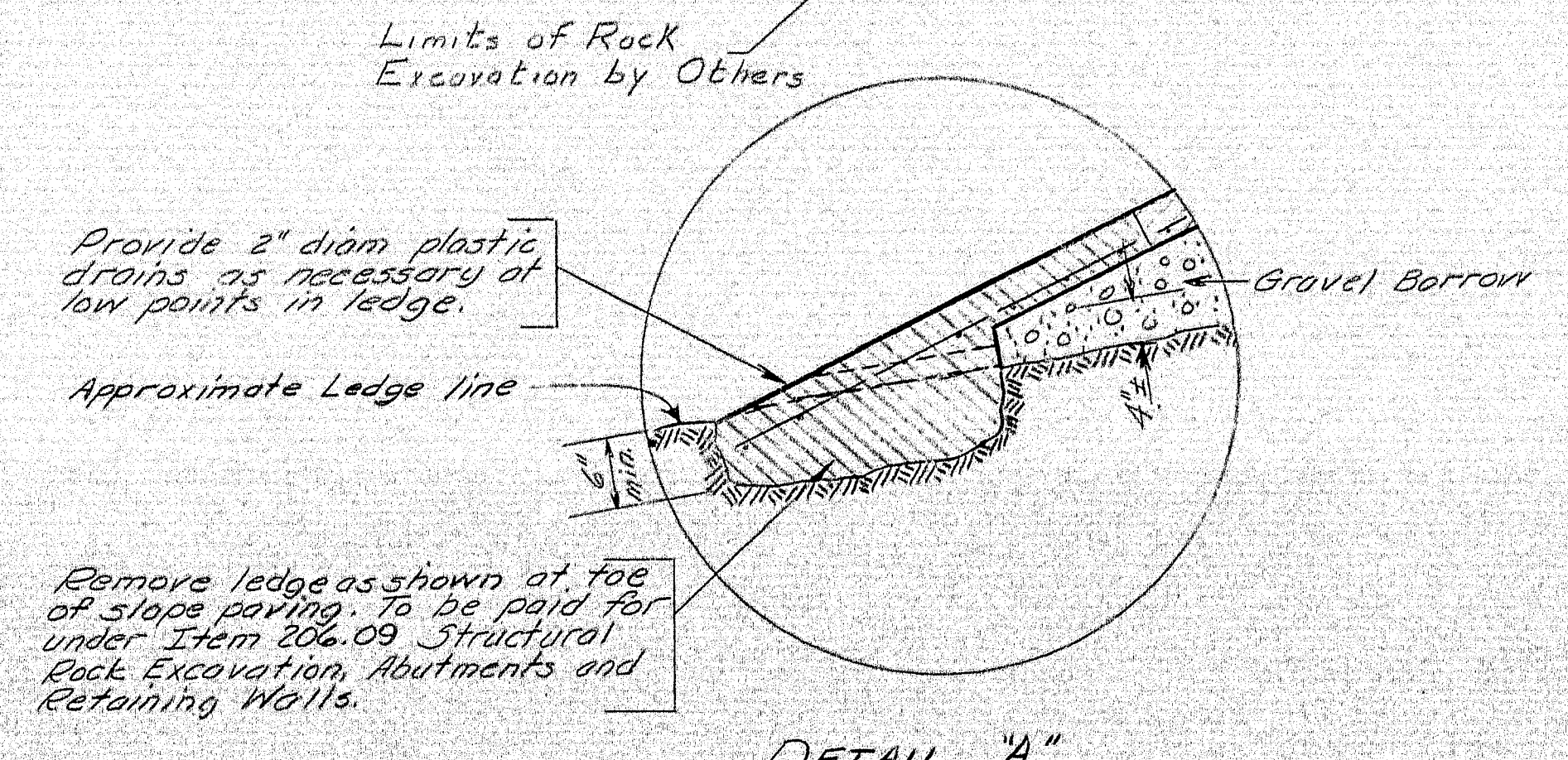
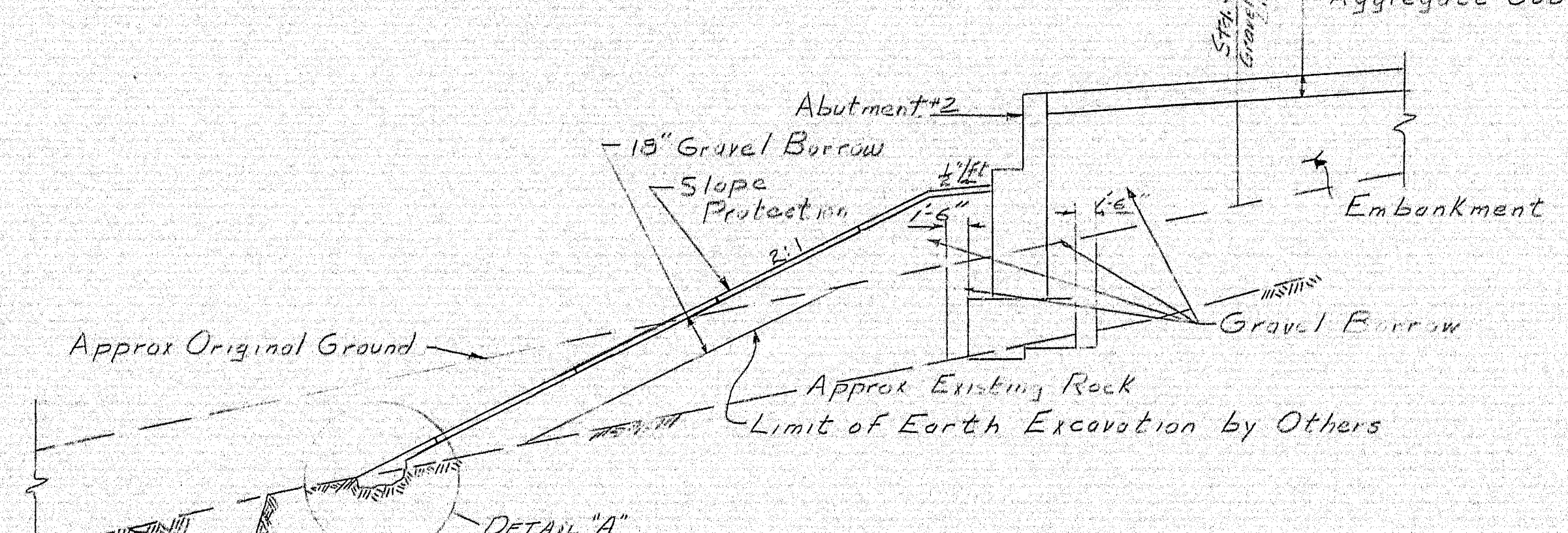
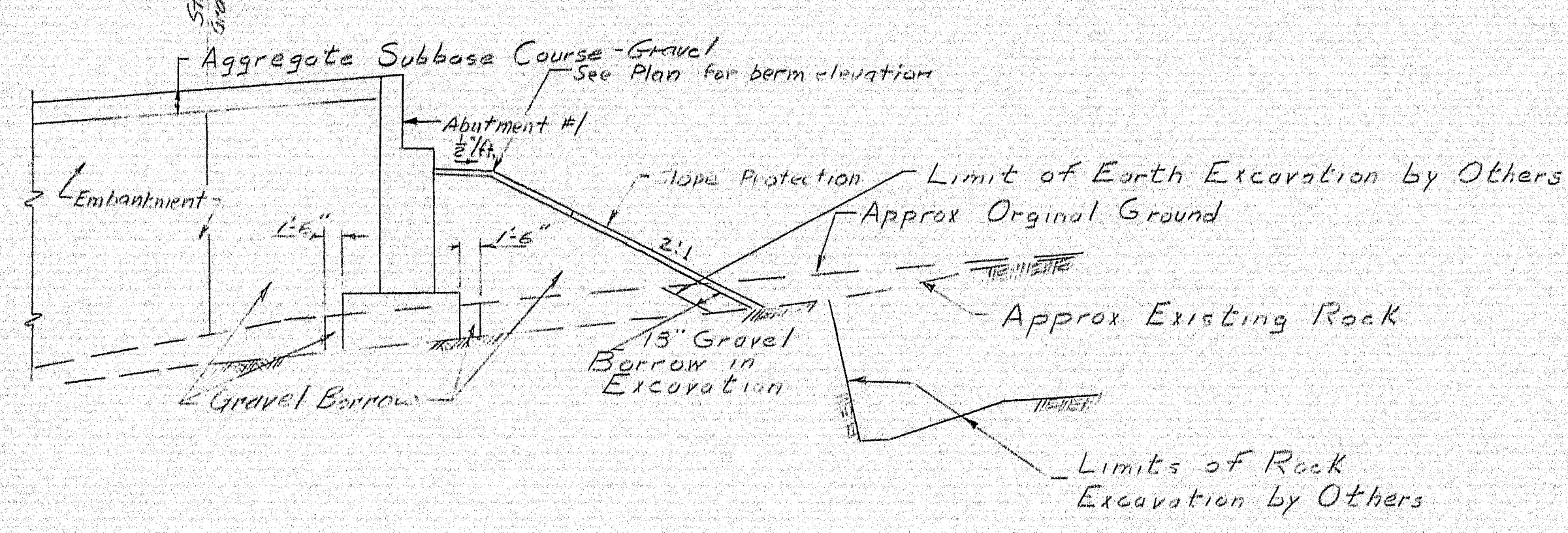
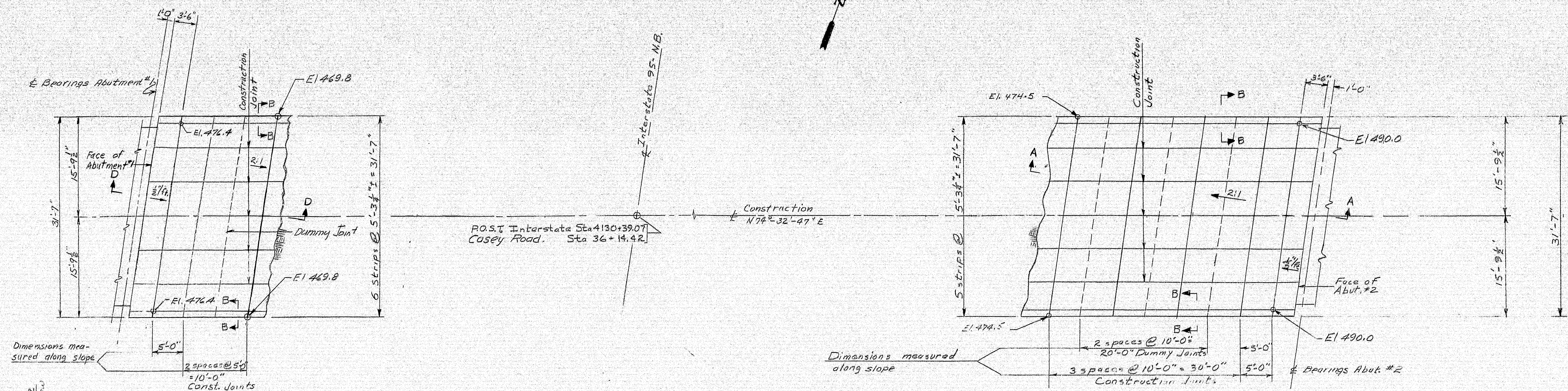












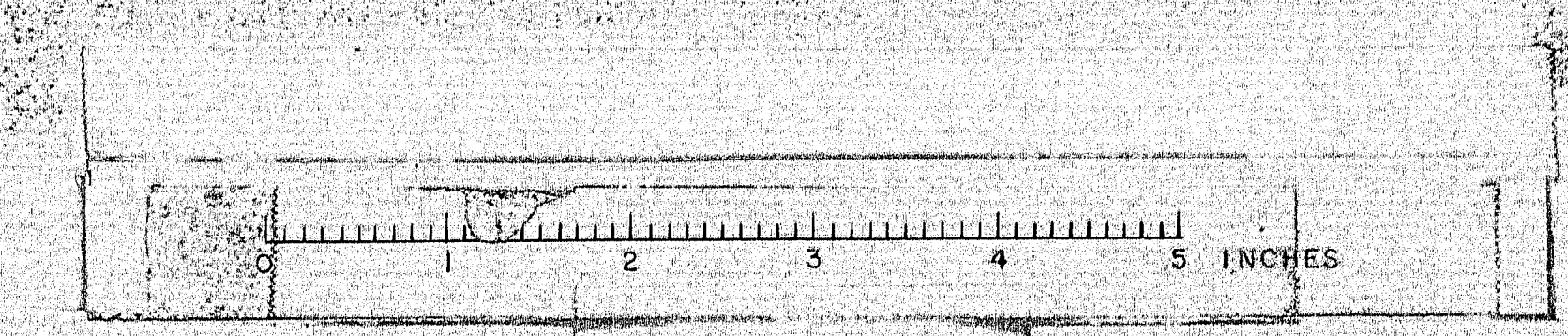
- NOTES**
1. Break bond at construction joints with a coat of asphalt paint.
  2. Reinforce with #10 gage 6"x6" steel mesh, not to pass through construction joints.
  3. Dummy joints shall be made with a side-walk edging tool to a depth of 1/4".
  4. The 15" of gravel borrow under the slope protection may be reduced or omitted, if in the opinion of the Engineer the existing material is suitable.
  5. Payment for any earth excavation required for slope protection will be considered incidental to Item 513.03 Slope Protection.

DESIGN - CDH  
TRACE - CDH  
CHECK - (initials)

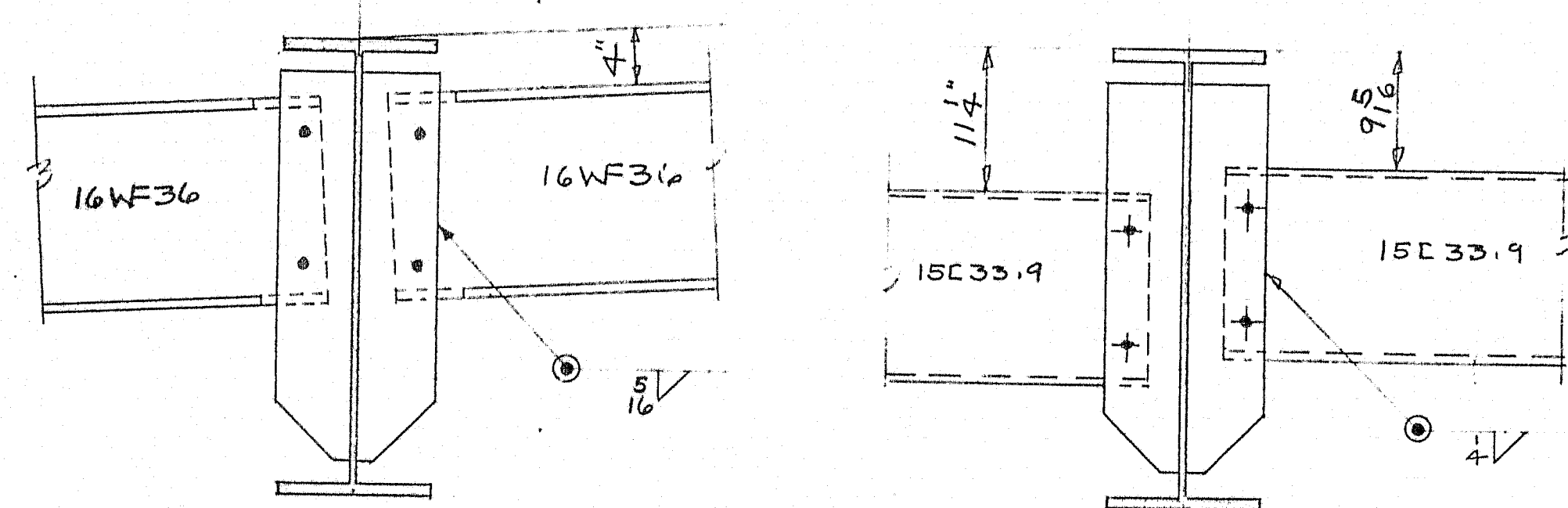
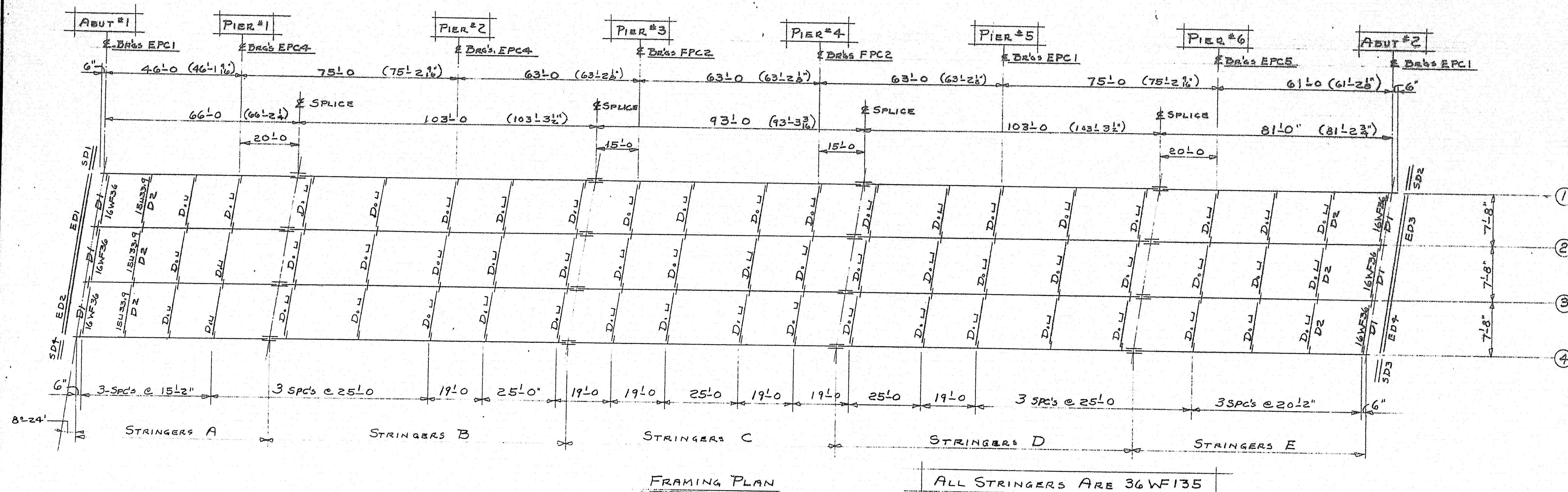
BRIDGE NO. SURVEY - PLOT -

STATE HIGHWAY COMMISSION  
BRIDGE DIVISION  
**CASEY ROAD BRIDGE**  
OVER  
**INTERSTATE 95**  
IN THE TOWN OF  
BENEDICTA, AROOSTOOK COUNTY  
AND IN THE TOWNSHIP OF  
T2,R6 W.E.L.S., PENOBSCOT COUNTY  
SLOPE PROTECTION  
SHEET 16 OF 26 AUGUSTA, MAINE MAR 1966

**VOID 100-199**







FRAMING PLAN				
PRINT ISSUE			Bancroft & Martin Inc.	
			Brown, Maine	
1	387A	12-22-69	CASHY RD. BRIDGE OVER I 95 BENEDICTA MAINE	
2	SHC	5-25-67		
3	FIELD	4-24-67		
1	387B	4-24-67	CUSTOMER: CALLOHAN & SONS DESIGNER: STATE HIGHWAY	
2	FIN.	4-24-67		
DRAWN 4-5-67 D.C.			ORDER VERBOL	
REVISION				
REVISION				
REVISION				

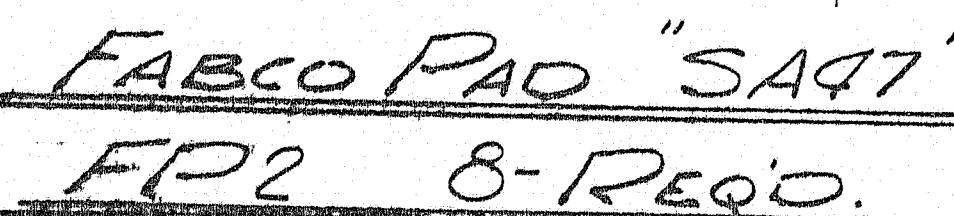
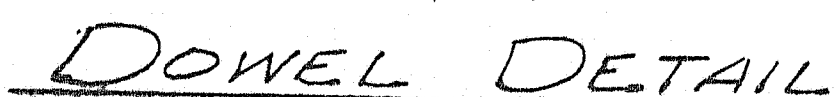
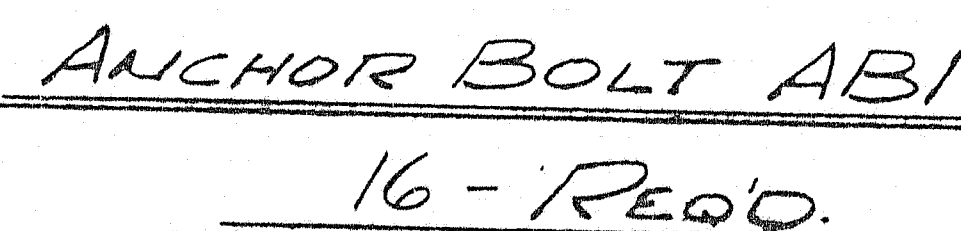
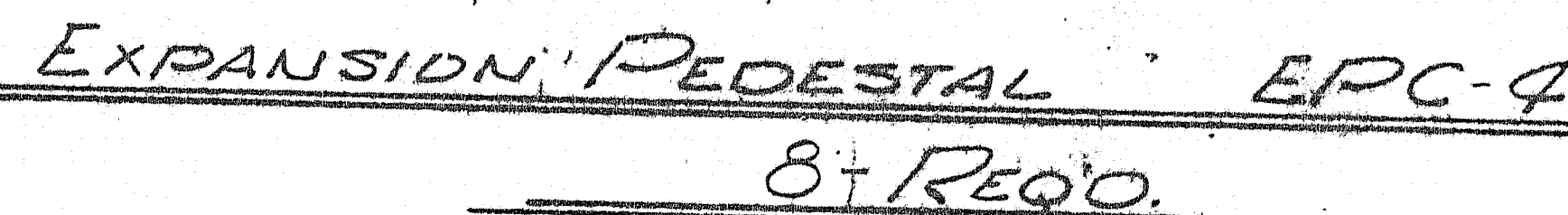
103-10

0 1 2 3 4 5 INCHES





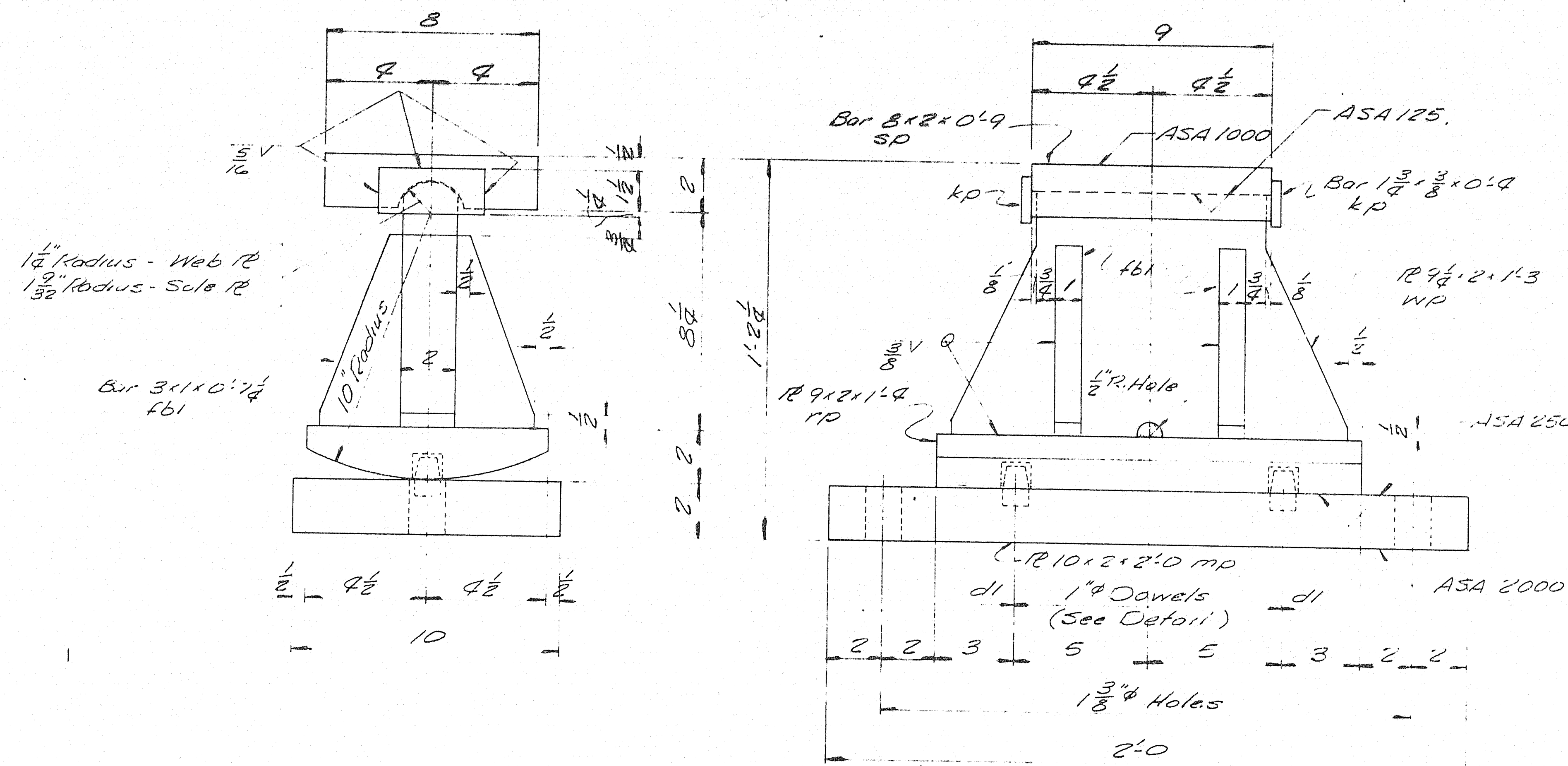




No point on top of sole plates "SP"  
and "down from top on sides, coat  
with boiled linseed oil.  
No point on surface with ASA 125 finish.  
coat with mixture of white lead and tallow.  
No point on Anchor Bolts - Oil thds.

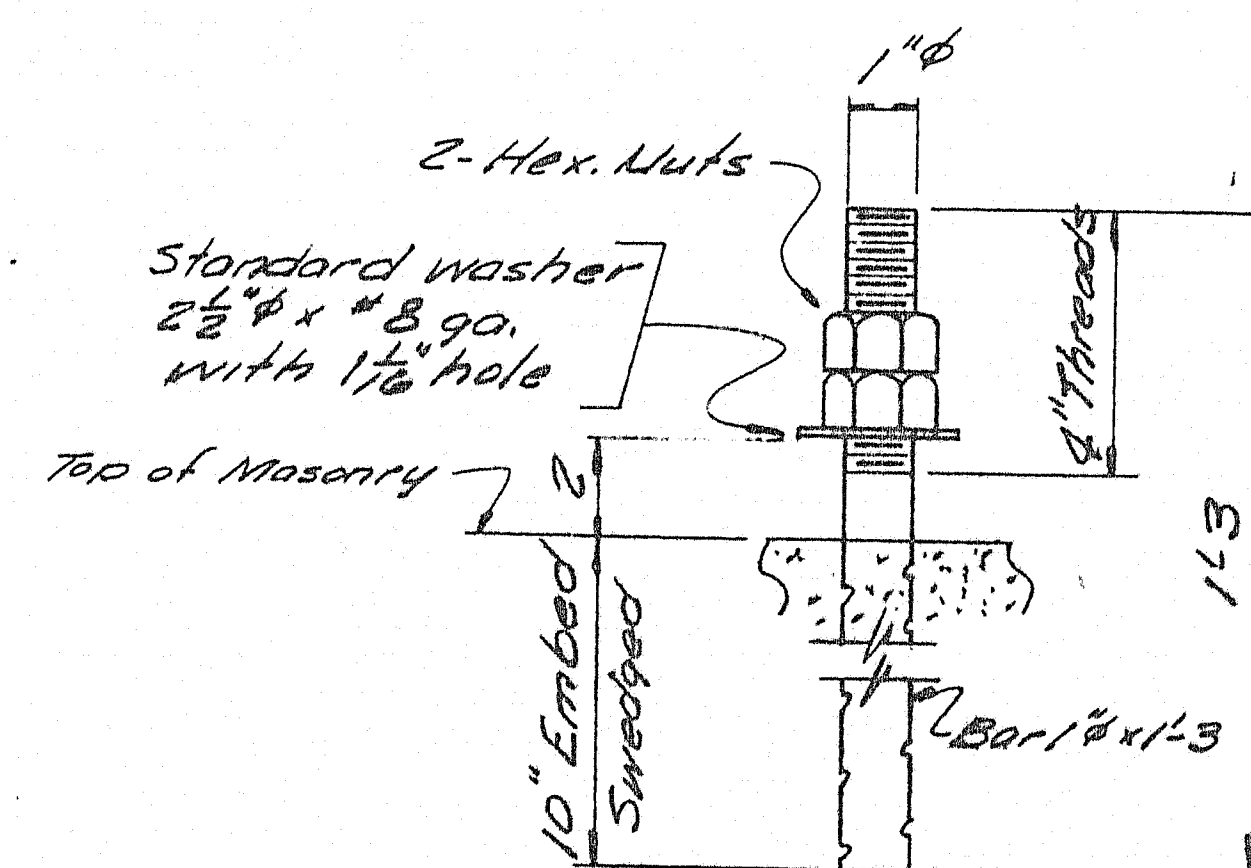
103-12





# EXPANSION PEDESTAL EPC-5

4-REQ'D.

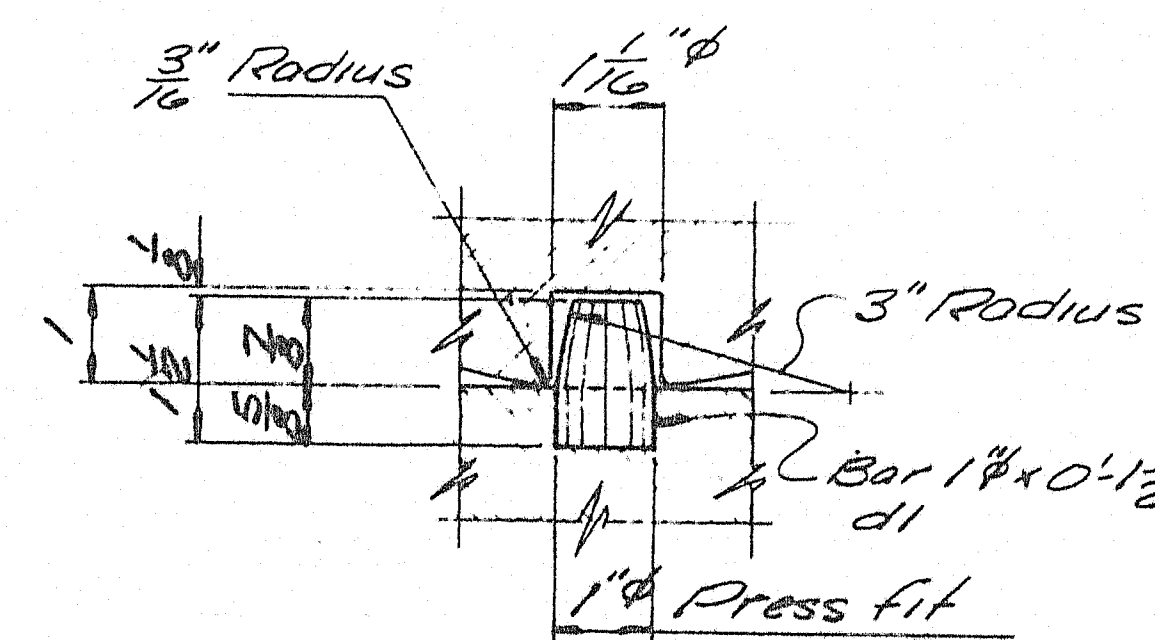


# ANCHOR BOLT ABI

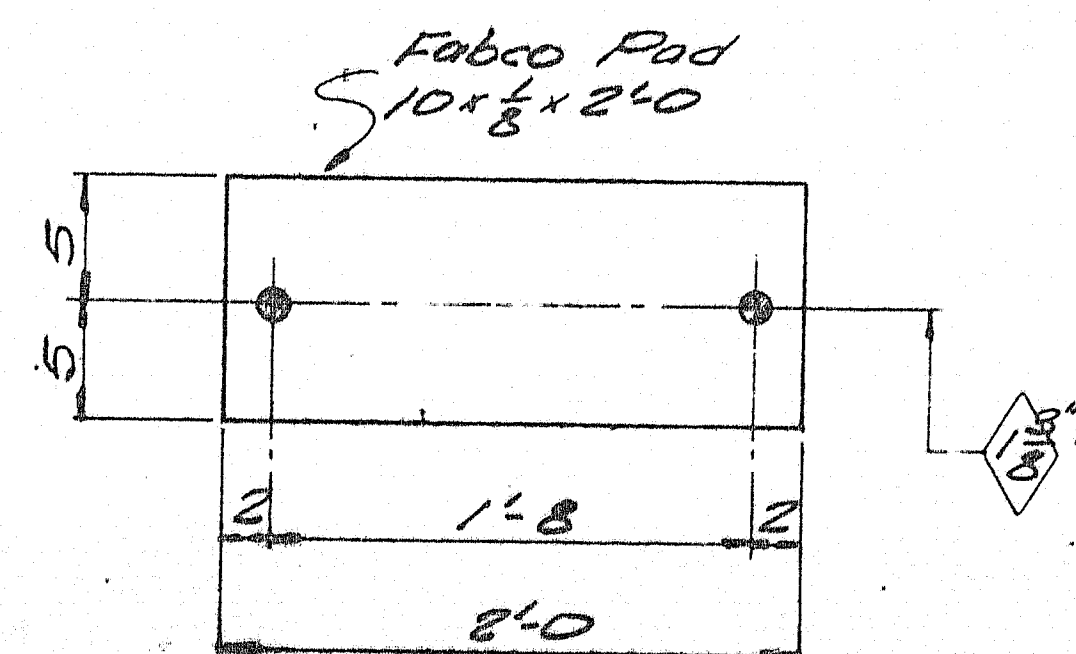
8-REQ'D.

## PAINT NOTE:

No paint on top of sole plates "sp" and 1" down from top on sides, coat with boiled linseed oil.  
No paint on surface with ASA 125 finish, coat with mixture of white lead and red lead.  
No paint on anchor bolts - oil, zinc.



## DOWEL DETAIL



## FABCO "SA47" PAD

EP3 4-REQ'D.

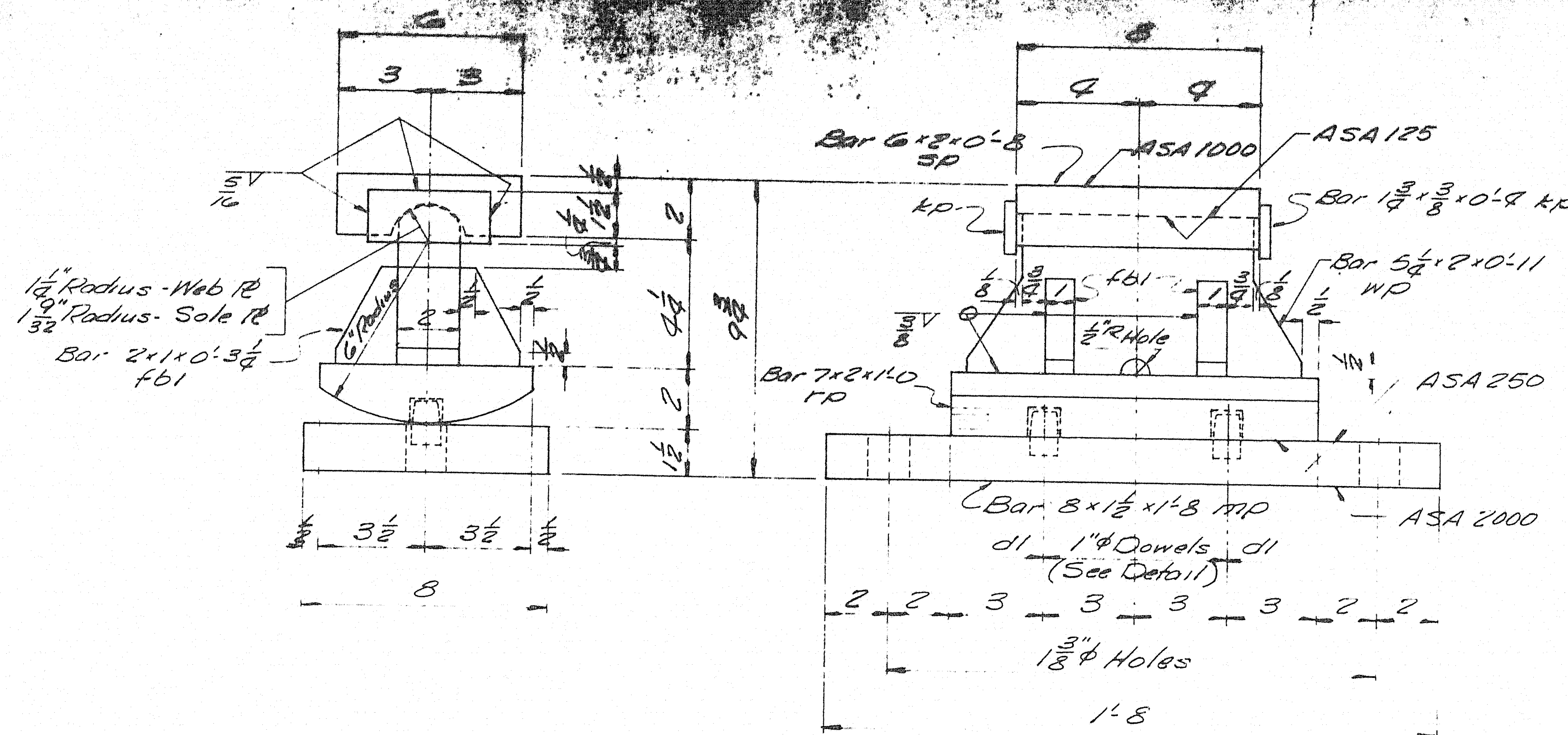
SHIP		BILL OF MATERIAL				DWG. NO.	
MARK	NO.	MARK	SHAPE	LENGTH	WT.	REMARKS	
EP3	4		EXPANSION PEDESTAL ASSY.				
	4	MP	R10x2	2 0			
	4	MP	R9x2	1 4			
	4	MP	R9x2	1 3			
	4	SP	Bar 8x2	0 9			
	16	FB1	Bar 3x1	0 7 1/2			
	8	dl	Bar 1" phi	0 1 1/2			
	8	kp	Bar 1 3/4 x 3/8	0 4			
ABI	8		Bar 1" phi	1 3		Sweeded	
	16	Shop	1" Hex Nut				
Field	8		1" Washer			Std. Washer - 2 1/2" O.D. x 1/8" Bore with 1/8" hole.	
EP3	4		Pad 10x2	2 0		Fabco Pad "SA47" Req. No.	

Allowance to be made for machining when cutting above plates.  
ITEM PROJECT NO. I-95-9 (39) 254  
Sole plates "sp" to be 1/8" thick to stringers.  
Bearing material to be ASTM A36. All bolts to be A7, A36, or A507.  
All welds to be made with E70 electrode.  
SHOP CONNECTIONS: Welded  
FIELD CONNECTIONS: As noted  
HOLES: As noted  
PAINT: Red lead per Maine S.M.C. spec, and as noted.  
APP. 3-7-67

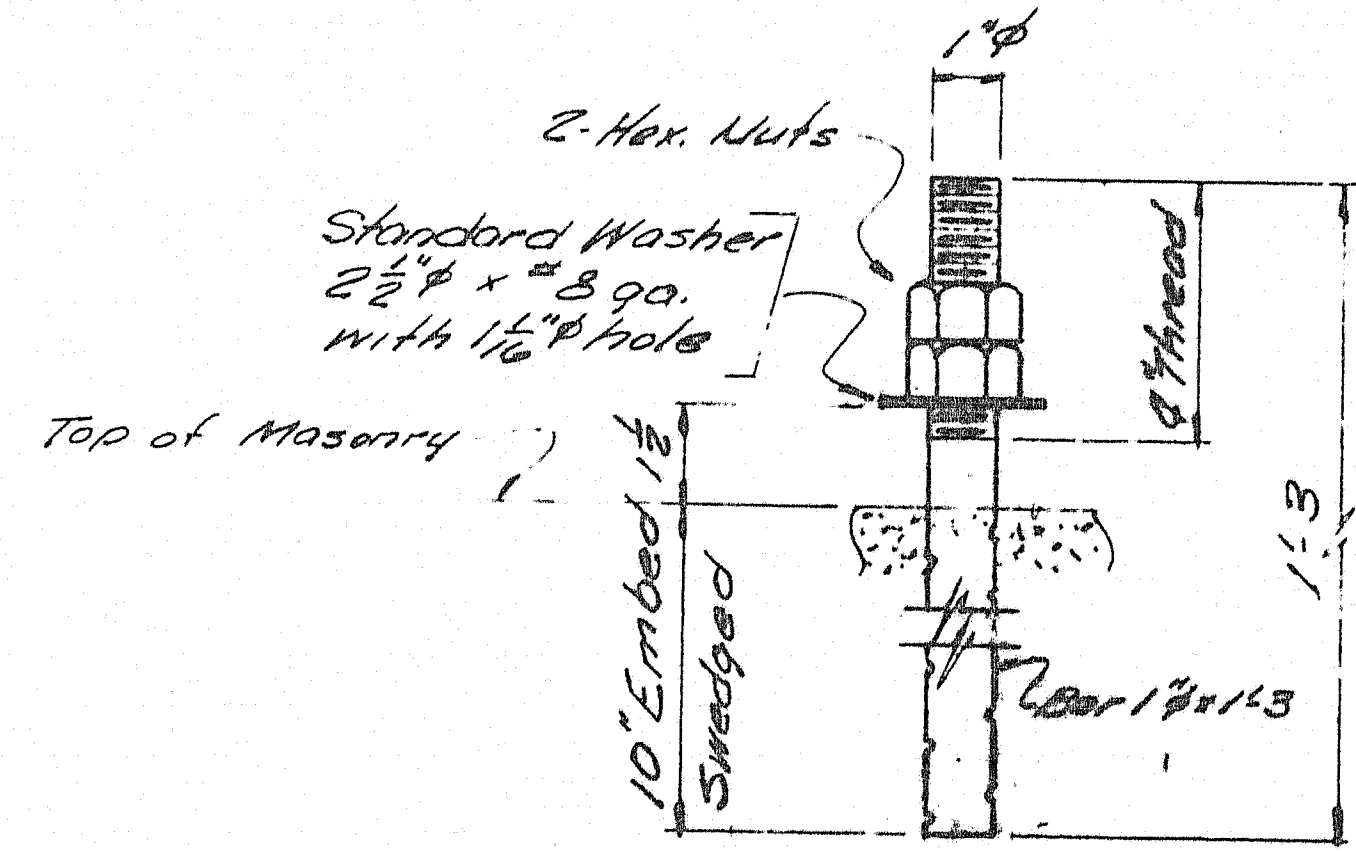
## BEARING PEDESTAL DETAIL

Bancroft & Martin Inc.  
P.O. Box 100, Portland, Me.  
CASEY ROAD BRIDGE OVER R.R.  
BENEDICTA, MAINE  
DRAWN 3-3-67 C.J.M.  
CHECKED 3-3-67 C.J.M.

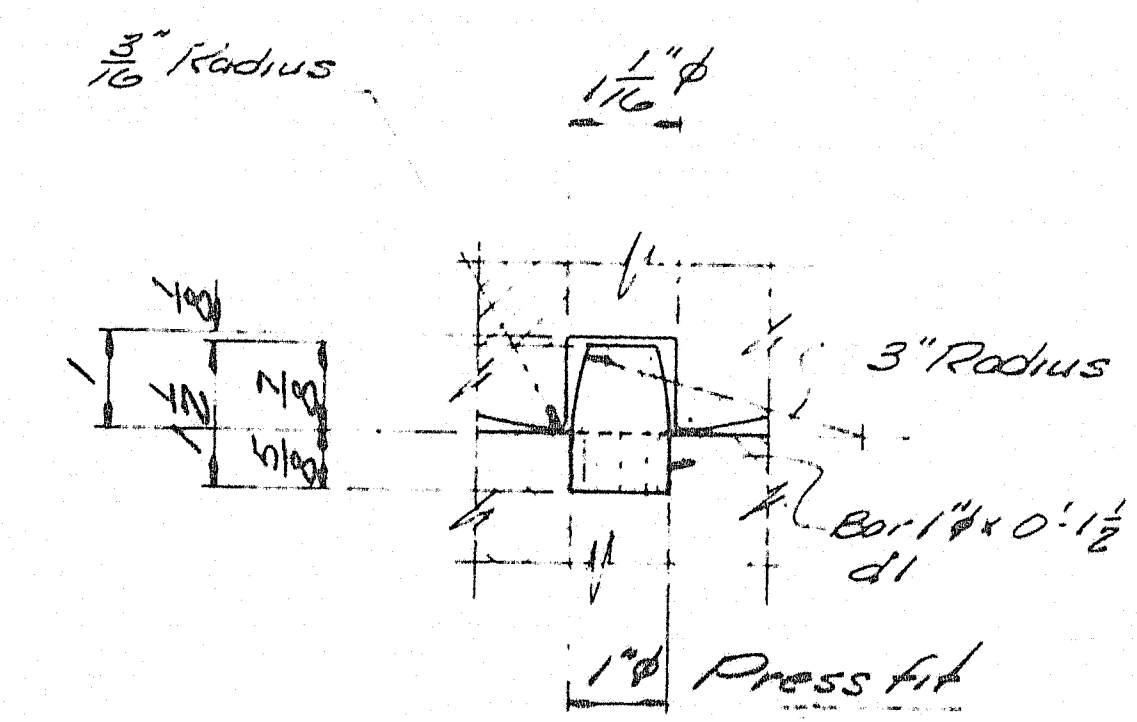




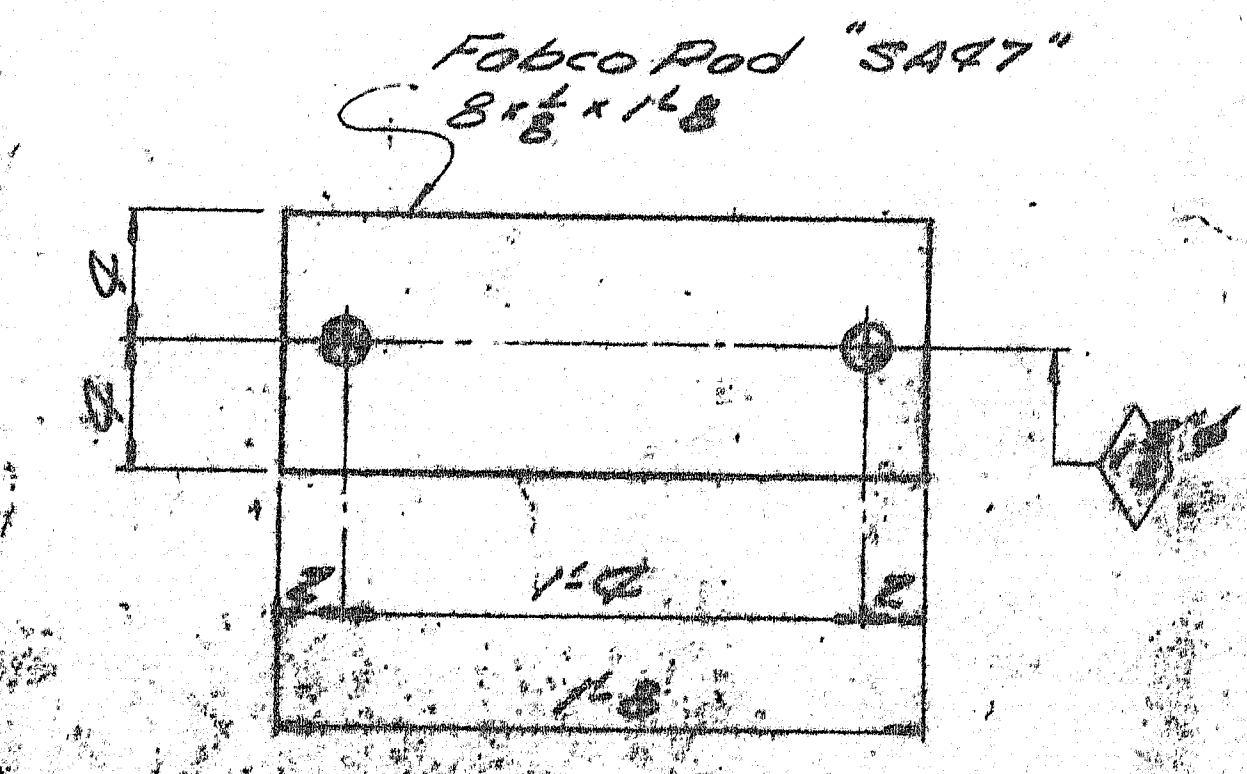
EXPANSION PEDESTAL EPC-1  
8-REQ'D.



ANCHOR BOLT ABI  
16-REQ'D.



DOWEL DETAIL



Fabco Pad SART  
8-REQ'D.

**PAINT NOTE:**  
No paint on top of sole plates, and  
and 1" down from top on sides, and  
with bolted flange on.  
No paint on surface with and the flange  
coat with mixture of red lead and zinc  
No paint on Anchor bolts, and plates.

MARK	NO.	MARK	SIZE	LENGTH	WT.	
EPC-1	8		EXP PEDESTAL ASSY.			
	8	MD	Bar 8x12	1 8		
	8	10	Bar 7x8	1 0		
	8	MD	Bar 5 1/2 x 8	0 11		
	8	SD	Bar 6x8	0 8		
	32	10	Bar 2x1	0 3 1/2		
	16	di	Bar 1 1/2	0 1 1/2		
	16	10	Bar 1 1/2	0 9		
ABI	16		Bar 1 1/2	1 3		Swaged
	32	shop	1" Hex Nut			
Field	16		1" washer			Std. washer 2 1/2" O.D. x 3/8" gage. with 1/16" hole
FP-4	8		Pad 8x8	1 8		Fabco Pad "SART" REQ. NO.

Allowance to be made for machining when cutting above plates.

ITEM -  
PROJECT NO. I-95-9(39)254  
SOLE PLATES "50" TO "100" FIELD WELDED TO STRINGERS.

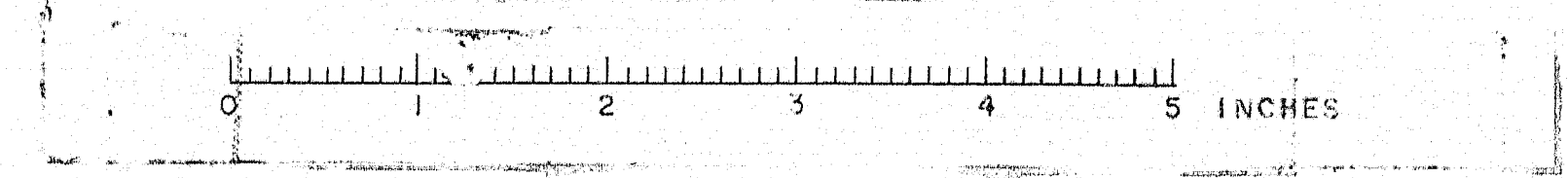
Bearing material to be ASTM A36, All bolts to be A7, A307, or A307.  
All welds to be made with E70 Electrode.

SHOP CONNECTIONS: WELDED  
FIELD CONNECTIONS: WELDED  
HOLES: As Noted  
PAINT: Red lead per Maine Spec. and as noted.

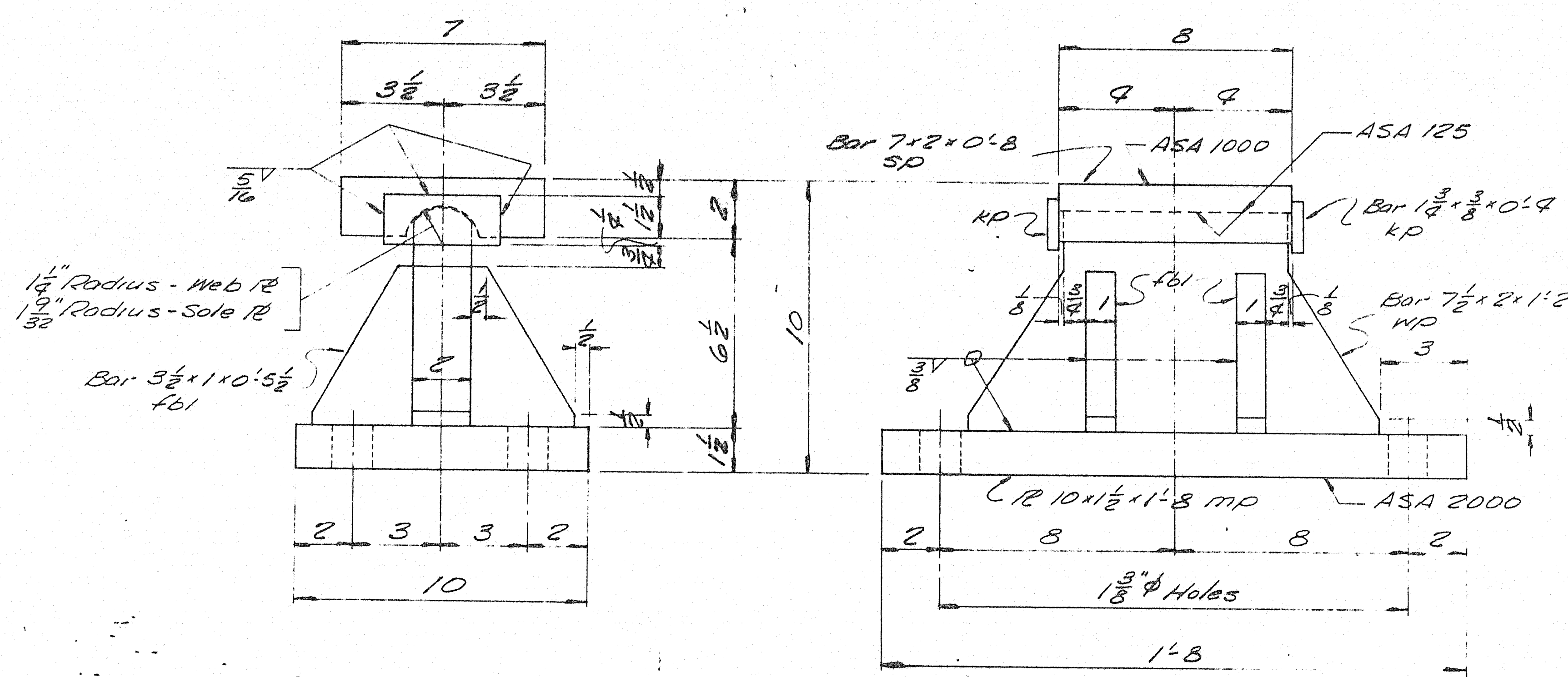
SEP 3-7-67

**BEARING PEDESTAL DETAIL**  
Bancroft & Martin Inc.  
South Portland 1, Maine  
CASEY ROAD BRIDGE OVER I-95  
BENEDICTA, MAINE  
CUSTOMER: CALLAHAN BRIDGE  
DESIGNER: M. H. C. EMMETT  
ORDER NO. VEDDC 1000

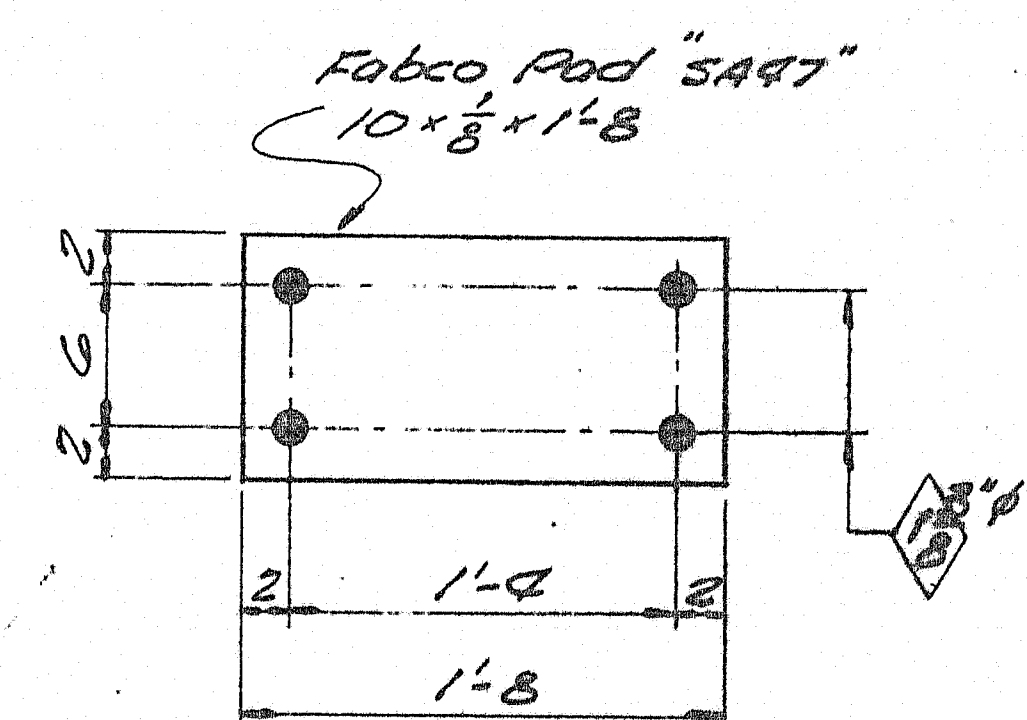
1- SERIA 12-22-67  
2- SERIA 5-25-67  
3- CUST 3-8-67  
4- PART 3-8-67  
3- FA 3-8-67  
BRIDGE 3-8-67  
EPC-1 8-REQ'D.



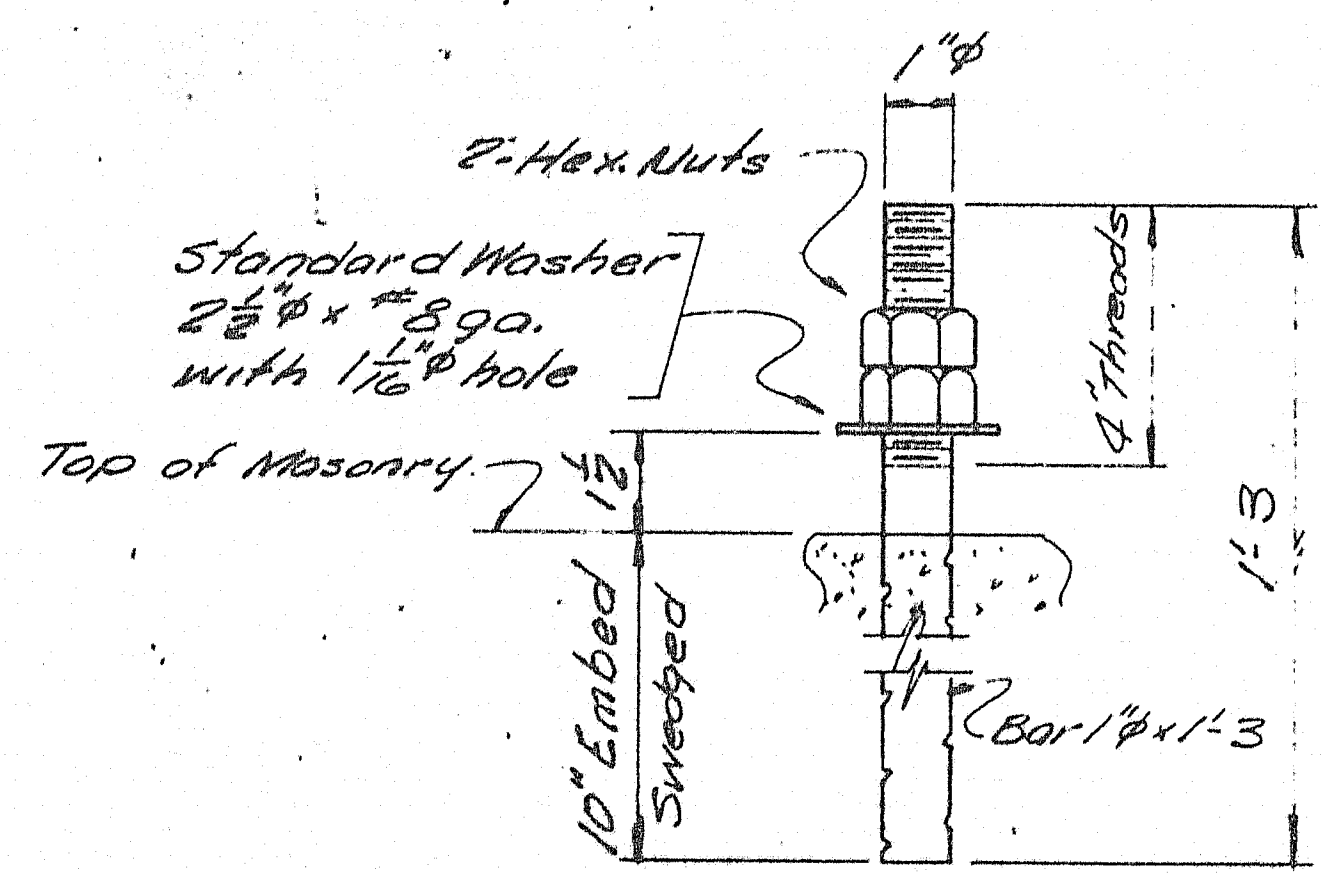




FIXED PEDESTAL FPC-2  
8-REQ'D.



FABCO "SA47" PAD  
FP5 8-REQ'D.



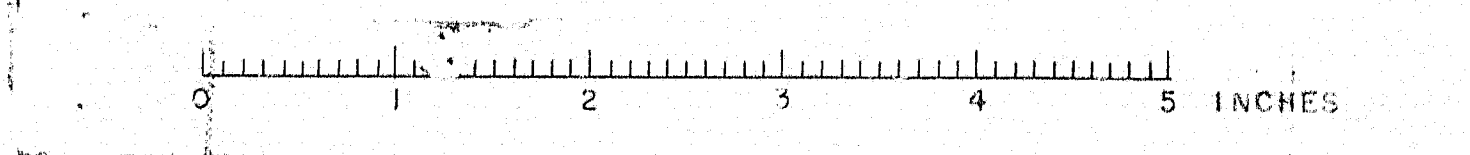
ANCHOR BOLT ABI  
32-REQ'D.

PAINT NOTE:  
1. No paint on top of sole plates, SP, and 1" down from top of sole plates with bolted knurled oil.  
2. No paint on surface of sole plates with bolted knurled oil.  
3. No paint on surface of sole plates with bolted knurled oil.  
4. No paint on surface of sole plates with bolted knurled oil.

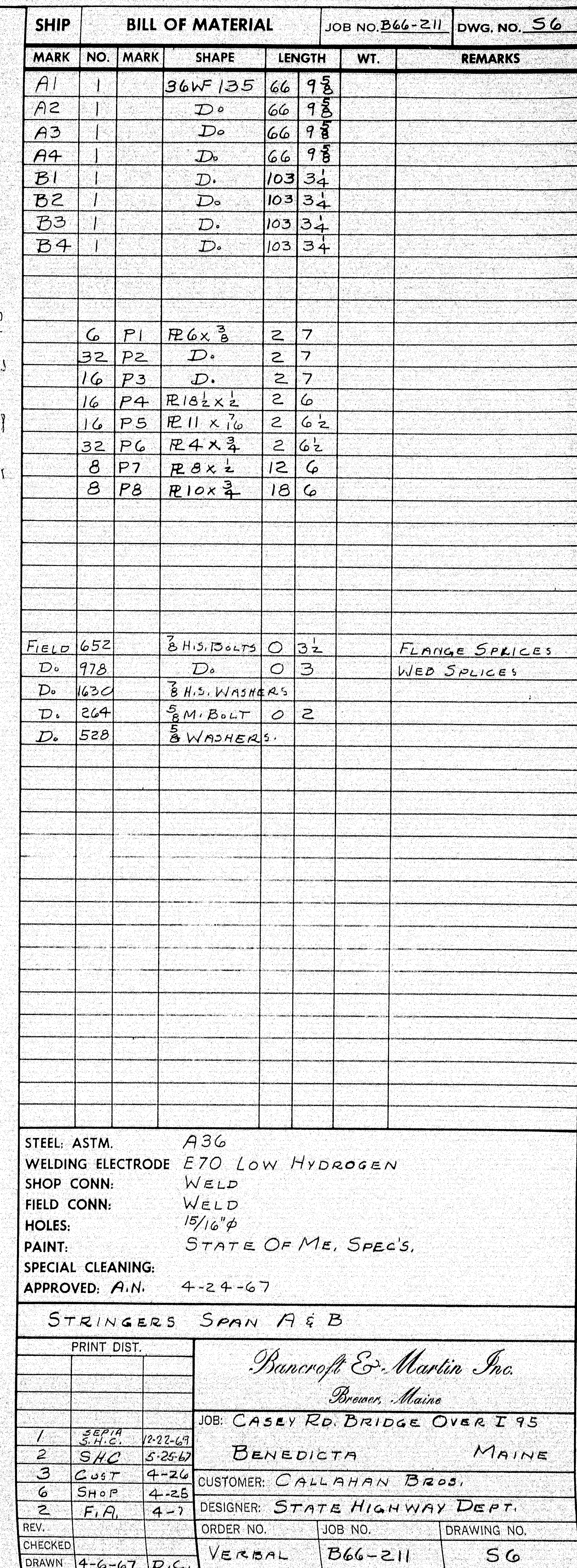
SHIP		BILL OF MATERIAL				DWG. NO. B66211-55
MARK	NO.	MARK	SHAPE	LENGTH	WT.	REMARKS
FPC-2	8		FIXED PEDESTAL ASSY.			
	8	MP	R 10 x 1 1/2	1	8	
	8	WP	Bar 7/8 x 2	1	2	
	8	SP	Bar 7/8 x 2	0	8	
	16	KP	Bar 1/2 x 3/8	0	4	
	32	FBI	Bar 3/4 x 1	0	5 1/2	
ABI	32		Bar 1/2 x 1	1	3	Swedged
	64	shop	1" Hex. Nut			
Field	32		1" washer			std. washer 2 1/2" o.d. x 5/8" g.o. with 1/16" hole
FP5	8		Pad 10 x 8	1	8	Fabco Pad "SA47" Req. #

Allowance to be made for machining when cutting above plates.  
ITEM PROJECT NO. I-95-9(39)254  
Sole plates "SP" to be field welded to stringers.  
Bearing material to be ASTM A36, Anchor bolts to be A7, A36, or A307.  
All welds to be made with E70 Electrode.  
SHOP CONNECTIONS: welded  
FIELD CONNECTIONS: As noted  
HOLES: As noted  
PAINT: Red lead per Marine Spec. and as noted.

1-300A	12-22-67
2-300A	5-25-67
3-300A	5-8-67
4-300A	5-8-67
5-300A	5-8-67
6-300A	5-8-67
7-300A	5-8-67
8-300A	5-8-67
9-300A	5-8-67
10-300A	5-8-67
11-300A	5-8-67
12-300A	5-8-67
13-300A	5-8-67
14-300A	5-8-67
15-300A	5-8-67
16-300A	5-8-67
17-300A	5-8-67
18-300A	5-8-67
19-300A	5-8-67
20-300A	5-8-67
21-300A	5-8-67
22-300A	5-8-67
23-300A	5-8-67
24-300A	5-8-67
25-300A	5-8-67
26-300A	5-8-67
27-300A	5-8-67
28-300A	5-8-67
29-300A	5-8-67
30-300A	5-8-67
31-300A	5-8-67
32-300A	5-8-67







103-16

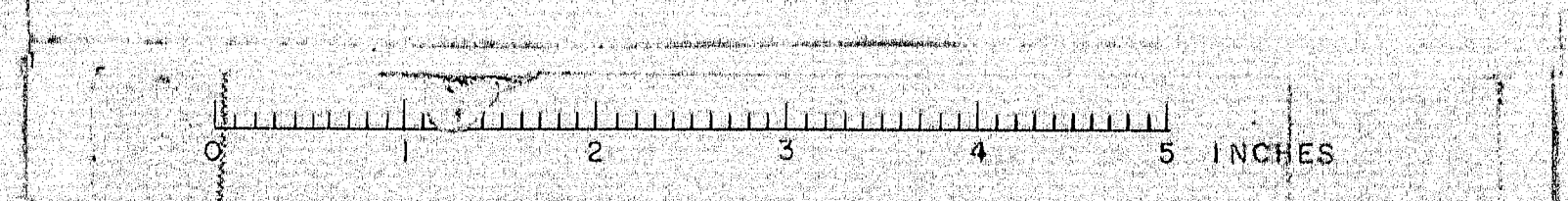
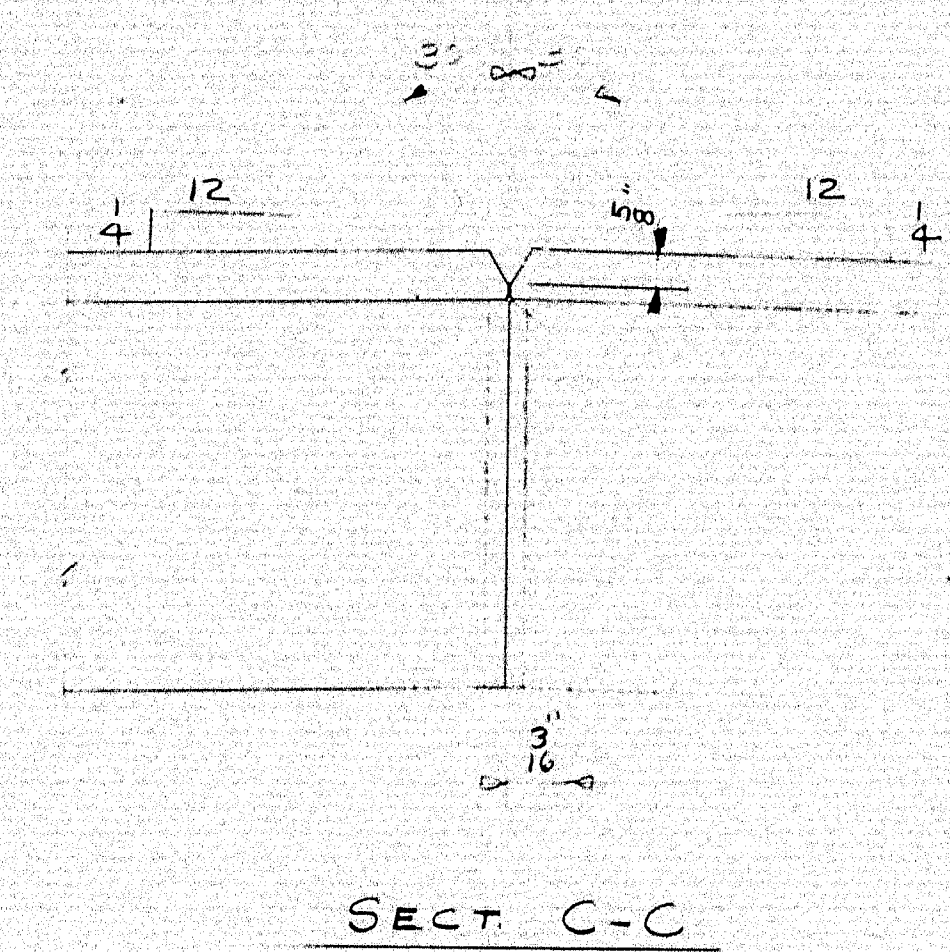












103-17B







